

UP 3D Printer Wi-Fi Upgrade Guide

for UP BOX, UP Plus, UP Plus 2 and UP mini

1. Replacing the CPU

Warning: Before replacing CPU, power off the machine.

1\ Remove old CPU from UP BOX.

Use M2.5 hex key to remove the 8 bolts on the back cover. Please note that the 2 bolts in the middle column are longer than the others.



Remove the old CPU.

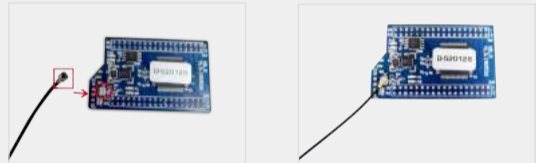


2\ Install the Wi-Fi enabled CPU for UP BOX.

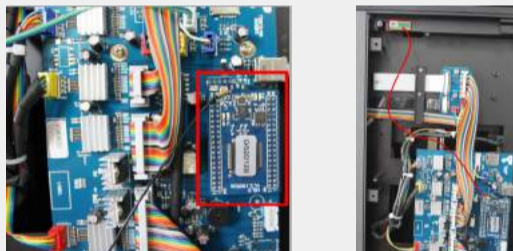
The package contains a jumper, a Wi-Fi antenna and the CPU.



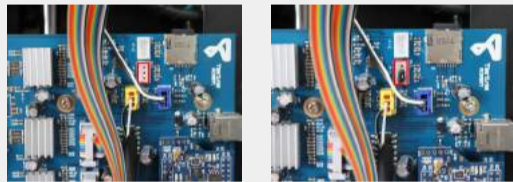
Connect the Wi-Fi antenna to the socket on the CPU.



Stick the Wi-Fi antenna on the metal frame of UP BOX as shown in the picture below.



Put the jumper onto the 2 lower pins in the connector labelled "M-C", then install the back cover.



Attention: If you have the filament check add-on, connect the device to the connector labelled M-C. If you do not have the filament check add-on, the lower 2 pins must be shorted, otherwise the print head will not heat up.

1\ Remove the Old CPU from UP Plus, UP Plus 2.

Use M2.5 hex key to remove the four M3x5 bolts from the 2 sides of the machine.



Open the cover, and remove the old CPU.



2\ Install the Wi-Fi enabled CPU.

Orient the CPU as shown in the photo. The Wi-Fi socket is at the lower left corner. Connect the antenna and place it onto the main board without attaching the other end. Make sure the pins are not shifted. Put back the cover.



1\ Remove the old CPU from UP mini.

Use M2.5 hex key to remove the 8 M3x5 bolts on the back. Note that the 2 upper bolts are longer than the others.



Open the back cover and remove the old CPU.



2\ Install the Wi-Fi enabled CPU.

Orient the CPU as in the photo below. The Wi-Fi antenna socket is at the top left corner. The antenna does not need to be attached to the other end. **Make sure no shifted pins** and put back the cover.



2. Install UP Studio

1\ Install UP Studio on PC or Mac

Go to www.up3d.com, and download the latest UP Studio software. Choose the 64bit (x64) or 32bit (x86) Windows version that fits your PC, or download the software from Apple's Mac App Store if you use Mac.




Download the installation package and install the software on your system.

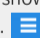
2\ Install UP Studio on iPhone or iPad

Search UP Studio in APP Store and download

3. Wi-Fi Setting

1\ Connect printer to computer via USB. Open UP Studio, click the Setting button  on the top right corner.



2\ All the connected printers will be shown. Click the "Detail" button. 



3\ Go to "Network" and choose the Wi-Fi network from the drop down list. The Wi-Fi network should be the same as the one your computer is connected to.



Select the network.

4\ Input the Wi-Fi password.



5\ An optional Private Password can be set to prevent unauthorized access, but anyone who connects the printer via USB cable can reset or change the password.



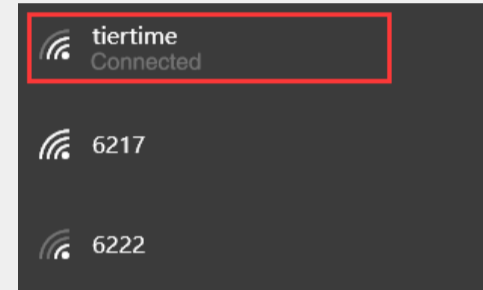
6\ Once connected to Wi-Fi, network or through USB, the printer will appear in the Printer Tab. You can select one printer to work with by clicking the icon. Once the printer is selected, a red "tick" will appear.



Available Printers Connected by USB

Available printer Connected by Wi-Fi

Attention: Please make sure printer and computer are on the same Wi-Fi network.



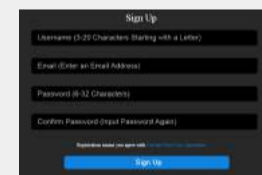
Available printer connected by USB.

4. Register and Activate CPU

We recommend you activate the CPU as soon as possible to unlock the print limitations and access to more features.



1\ Sign UP at "My Account"



2\ If signed up before, skip to step 5, otherwise fill in the form.

3\ After signing up, go to the registered mailbox to activate your account.



4\ Connect to your printer.

5\ Sign In



6\ User will find a list of connected printers. Choose the printer you would like to activate, and click the activation button next to it to activate the printer. User could also bind/unbind a printer to create/remove an association between a user account and a printer.



7\ Reboot the printer after activation.

Blackout Recovery

The new CPU comes with a new feature of restoring a print job that is interrupted due to electricity cut-off, or unwanted interruption. Once a print job is interrupted, after the power restored and the printer initialized, the software will ask if user would like to resume the interrupted print job. Choose Yes if you want to resume the print job. If you choose No, the print job will never be restored.

